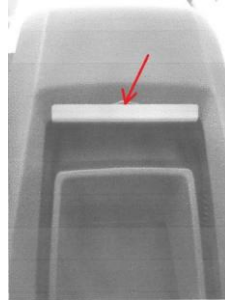


**Installation manual**  
Ducati Multistrada 1200, Mod. 2015>  
Multistrada 1200 Enduro, Modell 2016>  
Multistrada 950 Modell 2017>  
Multistrada 1260 Modell 2018>

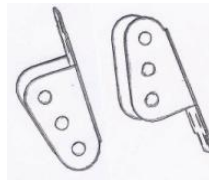
- Slide windshield completely down and disassemble it.
- At the top, glue V2A-edge protector (enclosed) to the inner square of the windshield adjustment system - **broad branch to the top**.



- Completely remove M5 screw with apex (setscrew) from Navihalter.
- Slide the Navihalter, coming from the top, over the windshield adjustment system und push it as far as possible down.
- Put the M5 setscrew back into the Navihalter.

**Take care that the apex of the setscrew rotates down in front of the V2A-edge protection - possibly press Navihalter sharply down!**

- Tighten screw - the Navihalter is now mounted.
- Try out in which height the Navi should be mounted on the Navihalter. For this, the adapter plate can be adjusted in height with the three drilled holes on the side and additionally it can be rotated by 180°.



- Screw base plate, e.g. from Garmin (Tip: Always lubricate M4 screws from Garmin.) or TomTom, and adapter plate together (trim too long screws for optical reasons).
- Lay connection cable (**slide windshield holder to the very top**) and mount it in such a way that it doesn't hinder the adjustment range of the shield.

Finally, adjust the inclination angle of the mounted Navi. Tighten equally the screws of the fiction hinges according to your preference (adjustable or fixed).